

MTX Series

Global Access Data Capture

The MTX data collection system is powerful enough to meet your needs today. . . And flexible enough to grow with those needs tomorrow. Modular design lets you start with the MTX-10 for simple in and out punching and easily upgrade to new technologies in the future. The MTX-20 accepts employee validation tables, displays messages and names, and offers interactive functionality including customizable keypad and display using MTX-PRO. It's your choice, based on your needs.



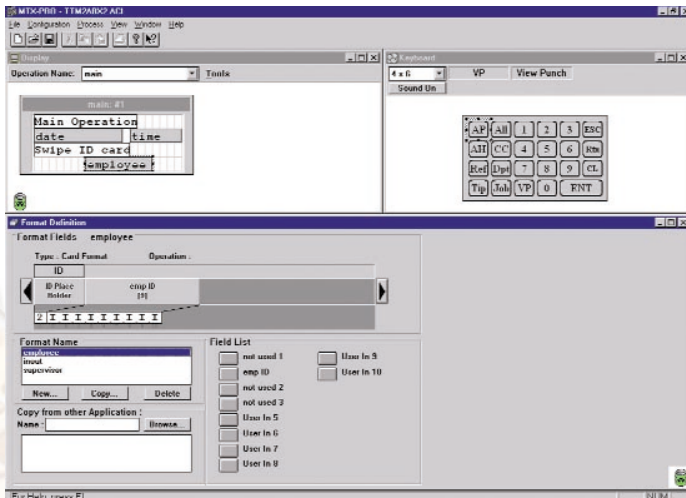
MTX-20 Grows with your business

- Easily upgradeable to newer technologies
- Includes MTX-COM Windows® software
- Allows downloads of validation tables and employee schedules
- Poll data
- Optional full power reserve (3 hours)
- Optional pen wand reader
- Optional internal 2400 bps or 33.6K modem
- Optional: two input/output signals with external keyboard interface
- Customizable to meet your needs

Specifications:

512K SRAM, 512K flash ROM
Supports standard mag stripe/bar code format (interleaved 2 of 5 and code 3 of 9)
Uses high speed I²C BUS architecture
RS-232C and RS-485 ports
Automatic terminal number assignment and baud rate adjustment
ID and schedule variation
Relay schedule (up to 50)
Auto polling
Keyless operation
24-position programmable keypad
PIN validation
4-line x 20-character liquid crystal display

* Specifications are approximate and are subject to change without notice. UL and SA approved. Windows is a registered trademark of Microsoft Corporation.



AMANO CINCINNATI®
We Understand Time

Atlanta • Chicago • Cincinnati • Dallas
Los Angeles • New York • Toronto

Corporate Headquarters: 140 Harrison Avenue, Roseland, NJ 07068-1239

800.526.2559
www.amano.com